



## MONOBLOCK INDUSTRIAL ENCLOSURE IP66



### BRES-43

Polyester enclosure 400 x 300 x 200 mm

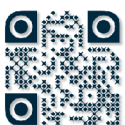


#### FEATURES

## SafyBox BRES

- Boxes & Cabinets made from fiber glass reinforced polyester, moulded by hot compression.
- Colour Light Grey RAL 7035
- Self-extinguishability: 960° test withstanding. Halogen free. Double insulation. No electrical contact risks.
- Degree of protection Ip66 UNE 20324 (EN 60529).
- Certification of compliance with IEC62208 enclosure standard. Suitable for indoor or outdoor use.
- Large door opening (180°). Version with plain or glazed door. Reversibility for installation right or left door opening.
- Anti-intruder hinges system.
- Customise service: colour, machining, mounting accessories, locks, company logo.
- 2 lock with double-bar insert or 1 lock with 3 action points and vandalism-proof.
- Version with metallic or polyester mounting plate.
- Resistant to harsh atmospheres.
- Light weight gives an easy installation.
- 25years. Long life lasting without maintenance under standard environmental conditions.

Code	Description	Height x Width x Depth	Weight
BRES-43	Empty standard enclosure colour light grey RAL 7035	400 x 300 x 200 mm	3,60 kg

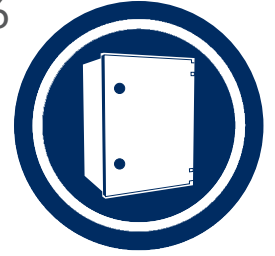




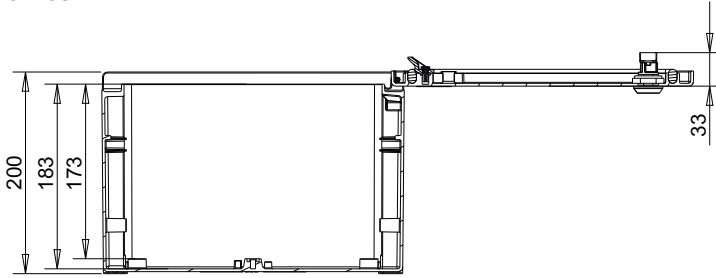
# MONOBLOCK INDUSTRIAL ENCLOSURE IP66

## BRES-43

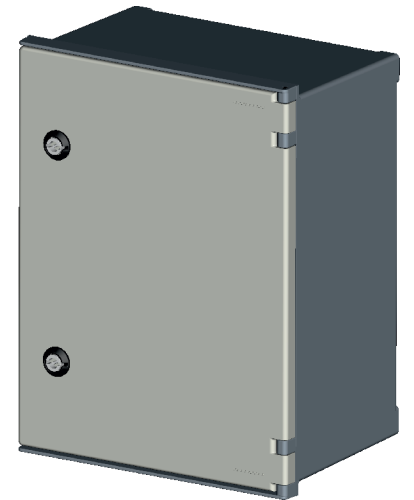
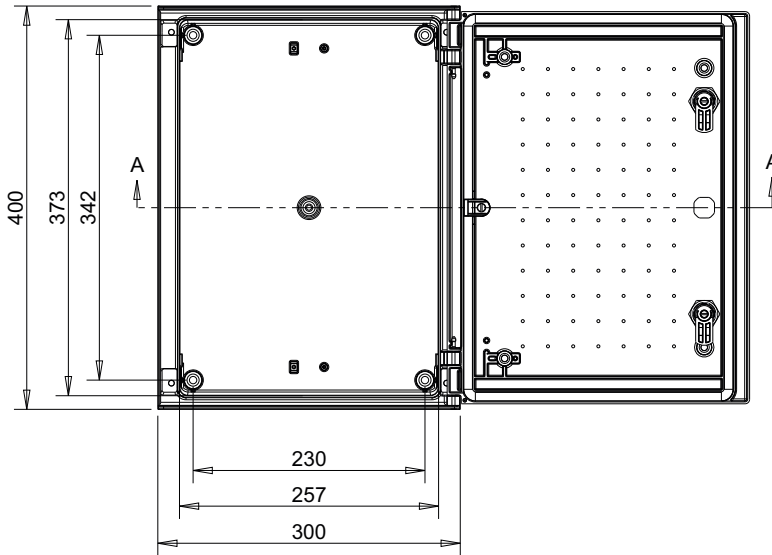
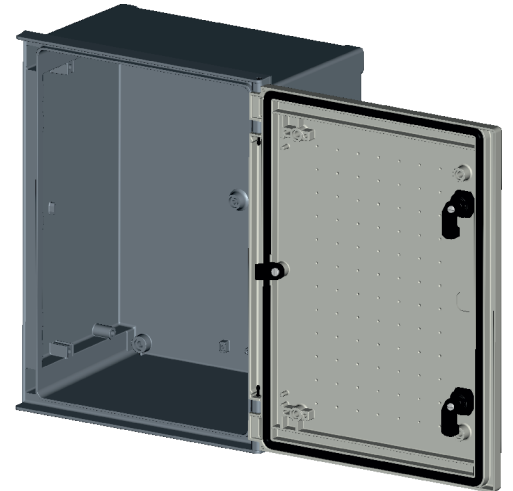
Polyester enclosure 400 x 300 x 200 mm



Standard  
IEC  
IEC-62208



Section A



### Packaging

packaging unit	1	packaging height	401,0 mm	Units per pallet 120 x 80 cm (Height 220 cm)	66
number of doors	1	packaging width	301,0 mm	Units per pallet 110 x 110 cm (Height 220 cm)	84
weight	3,60 kg	packaging depth	201,5 mm	Units per pallet 155 x 110 cm (Height 227 cm)	119

### Environmental performance

Minimum temperature	-30 °C	IP dust water protection degree IEC-60529	66
Maximum temperature	120 °C	IK impact protection degree IEC-50298	10
Compression resistance	100 kg		

### Electrical performance

Nominal tension direct current up to:	1500 VdC
Nominal tension alternative current up to:	1000 VaC
Maximum power dissipation $\Delta T=104^{\circ}F$ (wall surface)	58,8 W

### Installation and assembly system

Inside installation	Yes	Wall surface	Yes
Outdoor installation	Yes	Floor mounting	Yes
Flush mounting	No	Pole mounting	Yes